



GENERATOR SOURCE

SALES · RENTALS · SERVICE

MTU - 2000 kW - JUST ARRIVED

Generator Set Specs

Unit#: 88589
Manufacturer: MTU
Capacity: 2000 kW
Rating: Standby
Voltage: 115 Amps @ 12470 V
(60 Hz, Three-Phase)
of Leads: 6
Model#: 2000LXC6DT
Serial#: 338946-1-2-1211

Engine Specs

Mfr: MTU
Year: 2011
Hours: 116
Fuel: Diesel
Model#: 16V4000
Serial#: 5272010647

Description: MTU 2000 kW Standby Diesel Generator Model: 2000LXC6DT Serial# 338946-1-2-1211 Year 2013, 116 Hours, 12470 Volt, 3 Phase, Sound Attenuated Enclosure

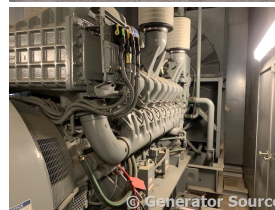
Additional Features: Weatherproof Enclosure, Auto Start/Stop, Safety Shut Down, 24 Volt Alternator, Dry Pack Air Cleaner, Muffler, Tank Type Block Heater, Digital Generator Panel, Digital Engine Panel, Engine Mount Radiator, 4000 Gallon Fuel Tank.

Overall Weight: 126,000 lbs.

Price: Call us at 800-853-2073 for a quote

Generator Source thoroughly tests all of our products!

The pricing displayed on our website is subject to change based on deinstallation costs, installation requirements, rigging/disposal, and any other situational variables, but we do try to keep it as up to date as possible.



Copyright © Generator Source. All Rights Reserved. Caterpillar, Detroit, Cummins, Perkins, SDMO, and all other brand names are trademarks of their individual prospective companies.

sales@generatorsource.com - generatorsource.com
303-659-2073 - 1-800-853-2073

FORMERLY
Diesel
SERVICE & SUPPLY