



# GENERATOR SOURCE

SALES · RENTALS · SERVICE

## Cummins - 125 kW - SOLD

### Generator Set Specs

**Unit#:** 88435

**Manufacturer:** Cummins

**Capacity:** 125 kW

**Rating:** Standby

**Voltage:** 433.7@208v Amps @  
120/208 V (60 Hz, Three-Phase)

**# of Leads:** 12

**Model#:** DGDK-5673736

**Serial#:** F040650735

### Engine Specs

**Mfr:** Cummins

**Year:** 2004

**Hours:** 470

**Fuel:** Diesel

**Model#:** 6BTA5 9G3

**Serial#:** 46399839

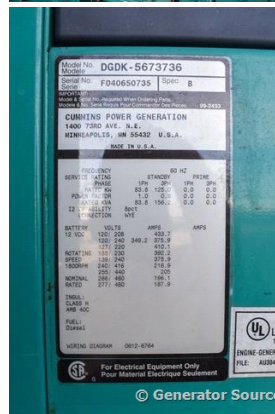
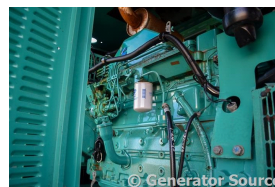
**Description:** Cummins 125 kW Diesel Generator Model #: DGDK5673736 Serial #: F040650735 Year 2004, 470 Hours, 120/208 Volt, 3 Phase, Weatherproof Enclosure

**Additional Features:** Weatherproof Enclosure, Auto Start/Stop, Safety Shut Down, 12v Volt Alternator, Dry pack Air Cleaner, 400 Amp Circuit Breaker, Engine-Mounted Muffler, Tank Type Block Heater, Digital Generator Panel, Digital Engine Panel, Engine Mount Radiator, No tag Gallon Fuel Tank.

Overall Dimensions: 121"L x 60"W x 91"H

Overall Weight: 4,000 lbs.

**Price:** Call us at 800-853-2073 for a quote



## Generator Source thoroughly tests all of our products!

The pricing displayed on our website is subject to change based on deinstallation costs, installation requirements, rigging/disposal, and any other situational variables, but we do try to keep it as up to date as possible.

Copyright © Generator Source. All Rights Reserved. Caterpillar, Detroit, Cummins, Perkins, SDMO, and all other brand names are trademarks of their individual prospective companies.

sales@generatorsource.com - generatorsource.com  
303-659-2073 - 1-800-853-2073

FORMERLY  
**Diesel**  
SERVICE & SUPPLY