



# GENERATOR SOURCE

SALES · RENTALS · SERVICE

## Cummins - 1750 kW - SOLD

### Generator Set Specs

**Unit#:** 88225  
**Manufacturer:** Cummins  
**Capacity:** 1750 kW  
**Rating:**  
**Voltage:** 2631 Amps @ 480 V  
 (60 Hz, Three-Phase)  
**# of Leads:** 6  
**Model#:** DQKB5568336  
**Serial#:** I020418328

### Engine Specs

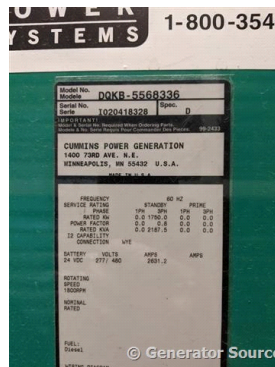
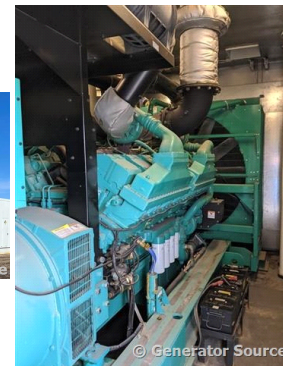
**Mfr:** Cummins  
**Year:** 2002  
**Hours:** 500  
**Fuel:** Diesel  
**Model#:** QSK60G6  
**Serial#:** 33152625

**Description:** Cummins 1750 kW Diesel Generator Model #: DQKB5568336 Serial #: I020418328 Year 2002, Less than 500 Hours, 480 Volt, 3 Phase, Sound Attenuated Enclosure with Base Fuel Tank

**Additional Features:** Sound Attenuated Enclosure, Auto Start/Stop, Safety Shut Down, 24 Volt Alternator, Dry Pack Air Cleaner, 3000 Amp Circuit Breaker, Muffler, Tank Type Block Heater, Digital Generator Panel, Digital Engine Panel, Engine Mount Radiator, 3000 Gallon Fuel Tank.

Generator Dimensions: 408"L x 144"W x 166"H  
 Overall Weight: 73,000 lbs.

**Price:** Call us at 800-853-2073 for a quote



**Generator Source thoroughly tests all of our products!**

The pricing displayed on our website is subject to change based on deinstallation costs, installation requirements, rigging/disposal, and any other situational variables, but we do try to keep it as up to date as possible.

Copyright © Generator Source. All Rights Reserved. Caterpillar, Detroit, Cummins, Perkins, SDMO, and all other brand names are trademarks of their individual prospective companies.

sales@generatorsource.com - generatorsource.com  
303-659-2073 - 1-800-853-2073

